

Information Pack

Website

www.togproholidays.com/iceland

Email

info@togpro.com



ICELAND 2024



Information Pack

Website

www.togproholidays.com/iceland

Email

info@togpro.com

This once-in-a-lifetime adventure will take you through this remarkable Nordic country's diverse and stunning landscapes. Your journey will take you through some of the world's most beautiful and awe-inspiring landscapes.

You'll have the chance to capture stunning photographs of glaciers, waterfalls, volcanoes, and more – all while exploring unique local cultures. And with its dramatic coastlines and breathtaking sunsets over snow-capped mountains, there's no doubt this is a photographic adventure unlike any other!

Your knowledgeable guide will provide expert instruction throughout your trip, ensuring your photos reach the next level. You'll enjoy master classes about composition, lighting techniques, post-processing methods and more while enjoying unique activities tailored for photographers.

Take advantage of this incredible chance to experience one of the world's greatest natural wonders up close!



TOG PRO
PHOTOGRAPHY MADE SIMPLE

Information Pack

Website

www.togproholidays.com/iceland

Email

info@togpro.com



ITINERARY

03.06.24 - 09.06.24



03.06.2024

City Centre Hotel

Flight from London
to Keflavík International Airport

Short drive from the airport
to the hotel

You'll find the City Centre Hotel in Reykjavik's booming creative quarter. More than just a great place to stay, the hotel offers luxury rooms and amenities right on its doorstep.



04.06.2024

Sólheimajökull glacier

Drive from our Hotel to
Sólheimajökull glacier.

Drive 2.5 hours (187km)

Mýrdalsjökull has many other outlet glaciers; overall, it is the fourth-largest ice cap in Iceland. Beneath its thick surface is one of the country's most infamous volcanoes. Some crevasses snake across the surface, spectacular ice ridges and formations, and a vivid colouration dances between a gleaming white, electric blue, and ash black.



04.06.2024

Drive from Sólheimajökull glacier to Dyrhólaey cliffs

Drive 24min (24.4km)

Dyrhólaey cliffs

The cliffs, beach, and shoreline with black volcanic sand make the place one of the best views in the country. The promontory itself is a mass of land accumulation wedged into the ocean by a formation of solid rock ridge that has resisted and withstood the erosions of the elements. This view looks back at Reynisfjara Beach.



04.06.2024

Reynisfjara Beach

Drive from Dyrhólaey cliffs to Reynisfjara beach.

With its enormous basalt stacks, roaring waves and a dramatic view of Dyrhólaey. National Geographic voted Reynisfjara one of the Top 10 non-tropical beaches to visit.

Drive 21 mins (19.7km)

The rocky sea stacks sitting off the shoreline, known as Reynisdrangar, were featured in Game of Thrones.



04.06.2024

Drive from Reynisfjara beach
to Eldhraun lava field.

Drive 1h 11min (92.3km)

Eldhraun Lava Field

The eruption that created the immense Eldhraun lava field took place over two years, from 1783 to 1784, and is considered the most poisonous eruption to date. We will also look for wild Icelandic horses along the way.



04.06.2024

Hotel Laki

Drive from Eldhraun lava field
to hotel Laki

Drive 7min (5.3km)

Situated in the heart of South Iceland, Hótel Laki has one of the most enviable locations in Iceland. We will stay here for two nights whilst we explore the local area.



05.06.2024

Skaftafell & Svartifoss

Drive from Hotel to
Skaftafell & Svartifoss

Drive 56min (73.5km)

We'll hike the 1km trail down to Svartifoss Waterfall. Svartifoss is such an elegant waterfall, 20 metres tall, and black columnar basalt formations beautifully frame the waterfall and give it its name, Black Fall. From afar, it looks like a big heart. (16 min walk)

We will hike the 1.5km trail to Skaftafellsjökull gönguleið The glacier tongue of Skaftafellsjökull sits in Skaftafell, a nature reserve in Öræfi, Vatnajökull National Park. It is one of many tongues stretching from the largest European glacier, Vatnajökull.



27827009

05.06.2024

Drive from Skaftafell &
Svartifoss to Glacier lagoon.

Drive 44min 56km

Zodiac boat ride glacier lagoon

We will embark on an adventure among sculpture-like icebergs and sail up to the very secluded glacier wall of Jökulsárlón, where we witness complete serenity and, at times, the captivating view of a breaking glacier (calving).

The face of the glacier is about 8 km from our starting point. The duration of the zodiac boat tour is 75 minutes.



05.06.2024

Diamond Beach

Walk from Glacier lagoon to
Diamond Beach.

1 min walk

Diamond Beach has striking black sand and is famed for the vast, glistening iceberg fragments that drift ashore. We will arrive early to capture the warm rays as they appear on the horizon.



05.06.2024

Hotel Laki

Drive from Diamond Beach
back to hotel Laki

Situated in the heart of South Iceland, Hótel Laki has one of the most
incredible views in Iceland.

Drive 1hr 32 min (126km)



06.06.2024

Drive from our hotel to
to Skógafoss Waterfall

Drive 1hr 19 min (109km)

Skógafoss Waterfall

The Skógafoss is one of the biggest waterfalls in the country, with a width of 25 metres (82 feet) and a drop of 60 m (200 ft). Due to the spray the waterfall consistently produces, a single or double rainbow is usually visible on sunny days.



06.06.2024

Seljalandsfoss waterfall

Drive from kógafoss Waterfall to
Seljalandsfoss waterfall

Drive 26min (30.4km)

Seljalandsfoss is a waterfall that can be fully encircled. We will walk a path behind it, shoot through the water and walk to the best vantage point from high up; with a drop of 60 meters (200 feet), it's a stunning place to photograph.



06.06.2024

Gullfoss the Golden waterfall

Drive from Seljalandsfoss waterfall to Gullfoss, the Golden waterfall.

Drive 1hr 50 mins (144km)

Gullfoss (translated to ‘Golden Falls’) is one of Iceland’s most iconic and beloved waterfalls in the Hvítá river canyon in Southwest Iceland. The water in the Hvítá River travels from the glacier Langjökull before cascading 32 meters (105 feet) down Gullfoss’ two stages in a dramatic display of nature’s raw power.



06.06.2024

Drive from Gullfoss waterfall
to Little geysir hotel.

Drive 10 min (9.5km)

Little geysir hotel

The accommodation is part of the Geysir Centre, which consists of a building complex with a restaurant, souvenir shop, outdoor and clothing store, snack shop and Geysir museum, all within walking distance.



07.06.2024

Drive from Little geysir hotel
to Strokkur Geysir.

Drive 2 min (0.5km)

Strokkur Geysir

After breakfast, we will photograph Strokkur Geysir, blasting water
to heights of around fifteen to twenty metres every five to ten
minutes, although it is known to reach up to forty metres. Other little
geysers are littered everywhere, and the ground is dyed vividly with
sulfur, copper and iron elements.



07.06.2024

Drive from Strokkur Geysir
to Öxarárfoss waterfall.

Drive 53 min (60.6km)

Öxarárfoss waterfall

We will walk up to the waterfall of Öxarárfoss, the most historic place on the island, about a 10-minute walk. The waterfall has a height of 44 feet and an average width of six meters (20 feet). The pool of water at the waterfall's base is dotted with large, smooth rocks. We will then walk further on, taking in the magnificent views.



07.06.2024

BLUE LAGOON

ICELAND

Drive from Öxarárfoss waterfall
to the Blue Lagoon.

Drive 1hr 11 min (88.5km)

Time for a relaxing (2-hour) dip in 101°F / 38°C therapeutic geothermal water. A moss-covered lava field surrounds the Blue Lagoon and is a fantastic experience. You'll receive a Silica mud mask, use of a towel and a drink of your choice. Be sure to bring your bathing suit. You'll also have access to a locker, showers, a restaurant, and a lagoon bar for drinks.



07.06.2024

The Viking Hotel

Drive from the Blue Lagoon to
the Viking hotel

Drive 30 min (37km)

Here, the emphasis is on the Viking Era, and as you enter, you step into the world of the past. The décor is in the Viking style and offers an authentic Viking feast with traditional meals served in old-fashioned Viking-style trays. There is never a dull moment during these famous feasts, and the guests can expect various treats and surprises from singing Valkyries and Vikings.



08.06.2024

Ytri Tunga Beach

Drive from the hotel to Ytri Tunga Beach

Drive 2hr 7min (163km)

Alongside Jökulsárlón glacier lagoon and the Vatnsnes Peninsula, Ytri Tunga is the most reliable place in Iceland to see seals. Just offshore, on some rocks protruding from the water, at least a few local colony individuals can be seen throughout the year.



08.06.2024

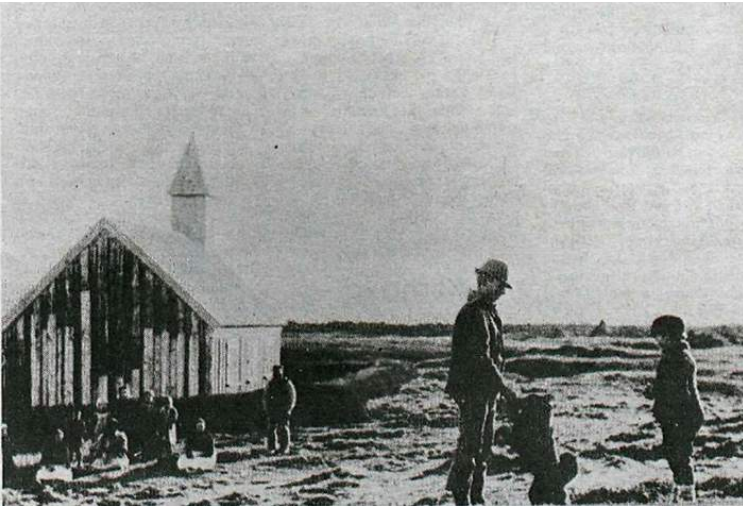
Búðakirkja

(The Black Church of Búðir)

Drive from Ytri Tunga Beach to
Búðakirkja
(The Black Church of Búðir)

Búðakirkja is a small wooden church on the south side of Snæfellsnes Peninsula- Iceland. It is a local parish church built in 1848. The church is known for its beauty in the building and the surrounding area.

Drive 20 mins (20.5km)



08.06.2024

Drive from Búðakirkja
to Arnarstapi

Drive 20 mins (19.2km)

Arnarstapi

With an eroded circular stone arch called Gatklettur, the interplay of spectacular waves and the sun's light creates a fascinating spectacle. Large colonies of the Arctic tern also nest in the area. Records of settlements around Arnarstapi date back to the Bárðar saga Snæfellsáss, an ancient Icelandic Saga that tells of the half-human, half-ogre who once lived on the Snæfellsnes peninsula. Since his death, he has been considered the area's guardian spirit.



08.06.2024

Drive from Arnarstapi to
Lóndrangar

Drive 8 mins (8.5km)

Lóndrangar

Once a volcanic crater, all that remains after aeons of ocean battering are two great pillars upon a cliff, one 75 metres (246 ft) high and the other 61 metres (200 ft).

Their dramatic scale has earned this incredible formation the nickname the Rocky Castle. We will hike to one of the most impressive formations called Lóndrangar, a pair of rock pinnacles made of basalt (approximately 230 ft high).



08.06.2024

Djúpalónssandur

Drive from Lóndrangar
to Djúpalónssandur

Drive 9 mins (7.5km)

It is one of the most beautiful black lava pearl beaches in Iceland. This is an arched-shaped bay with mysterious rocks, intense black sand, marvellous coast rocks, and black pebbles. You will witness the intensely strong and human-sized waves that never miss hitting the shore with absolute power that engulfs everything on its way.



08.06.2024

Drive from Djúpalónssandur
to Saxhóll Crater

Drive 13 mins (13.7km)

Saxhóll Crater

From the top of the crater, you will be blessed with the most spectacular panoramic views over the Atlantic Ocean and the expansive, dried lava fields of the Snæfellsnes Peninsula.

The crater is approximately 100 m (100 ft) high with a helpful walking path and steps to make the ascent easy for guests and takes around 10 minutes.



08.06.2024

Drive from Saxhóll Crater
to Kirkjufell Mountain

Drive 40 mins (43.9km)

Kirkjufell Mountain

Kirkjufell is a mountain 463 meters or 1519 feet above sea level on the Snæfellsnes peninsula in the Western part of Iceland. Standing tall above the small fishing town of Grundarfjörður, Kirkjufell is the most photographed mountain in Iceland, one of the top 10 most beautiful mountains in the world, and yet most recognized as being “Arrow Head Mountain” on Game of Thrones.



08.06.2024

Hotel Kirkjufell

Drive from Kirkjufell Mountain
to Hotel Kirkjufell

The hotel offers rooms that have been beautifully designed with
magnificent views over the bay. We will relax, review our
images and go over editing techniques.

Drive 7 mins (3.5km)



09.06.2024

Keflavik International Airport

Drive from Hotel Kirkjufell to
Keflavik International Airport

Drive 2hr 18 mins (172.2km)

We will return to Keflavik International airport on the last day
for our return flight home.





What's Included

Driver

Professional Photography Guide

Transfers & Transportation

1-1 Photography Tuition

Image critique and editing tutorials

2 hour Zodiac boat ride

2-hour Blue Lagoon experience

5 Hotels

Park fees

Breakfast - *excluding the first day*



What's Not Included

Flights

Lunch, dinner & drinks

Personal travel insurance

Personal equipment insurance

Additional information

Trip dates: 03.06.24 - 09.06.24

Transport will be a 9 seater minibus.

Outbound flight number: FI451

Maximum of 8 guests.

LHR 13:05 - 15:15 KEF

Return flight number: FI454

You must have a full British passport valid for at least six months from the planned departure date from Iceland.

KEF 16:10 - LHR 20:20

Personal travel insurance is required.

You must sign and agree to the terms and conditions of our contract.

Personal equipment insurance is recommended.

If you're travelling from outside the UK, use [Travelscope](#) to find out if you need to purchase a visa.



Additional information

Rooms are single occupancy and will be either a double, twin or single.

Unfortunately, this trip is not wheelchair accessible.

This trip is not recommended for pregnant travellers.

We will be travelling during Iceland's summertime, please note the sun never fully sets. The average temperature in June is 14°C / 57 °F.

Suitable for beginner, amateur, enthusiast and pro photographers. (non-photographers are also welcome)

DSLR, mirrorless, compact or iPhone cameras are suitable.

There will be some moderate walking and hiking.





Recommended clothing

Waterproof Coat
Waterproof trousers
Swimsuit
Walking boots
Sunglasses

Recommended equipment

Camera & Charger
Spare camera batteries
Spare memory cards
Plug adaptor
Camera bag (hand luggage size)
Cleaning kit
Wide Angle Lens - 14mm - 35mm
Standard zoom lens - 24mm - 70mm
Zoom lens - 200mm+
Filters - Polarising and Neutral-density
A tripod
Laptop & charger
External hard drive



Price £3,499 pp

Limited to 8 guests

Deposit: £500 to secure your place.

The final instalment of £2,999
to be paid by 01.04.24.

To book, please visit our website. If
you have any questions, please feel
free to email us.

Website

www.togproholidays.com/iceland

Email

info@togpro.com

